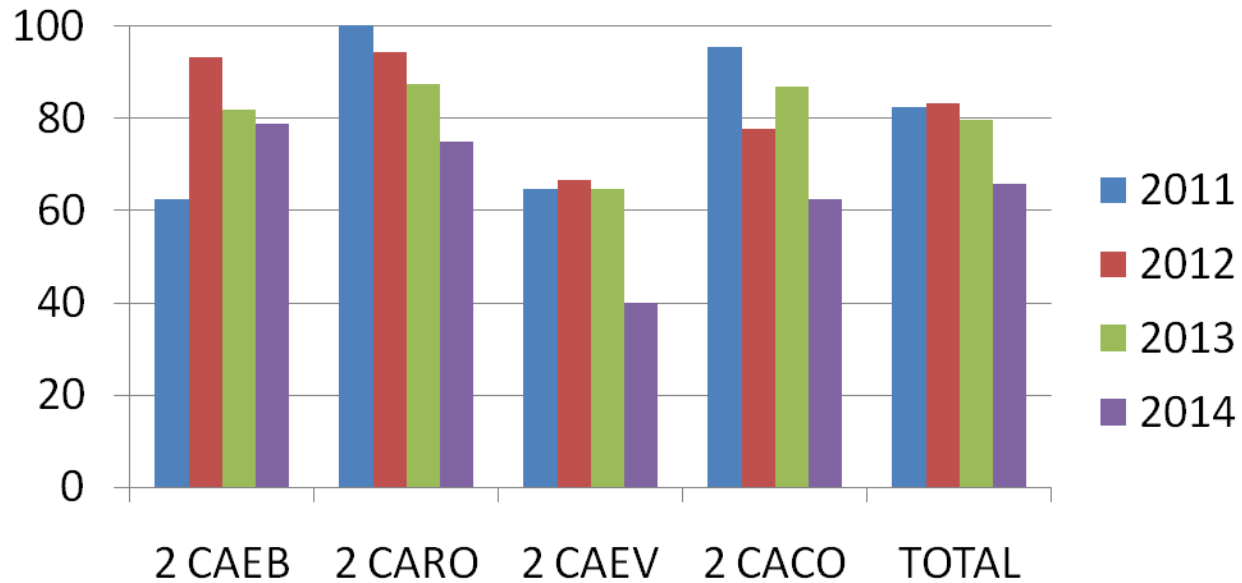
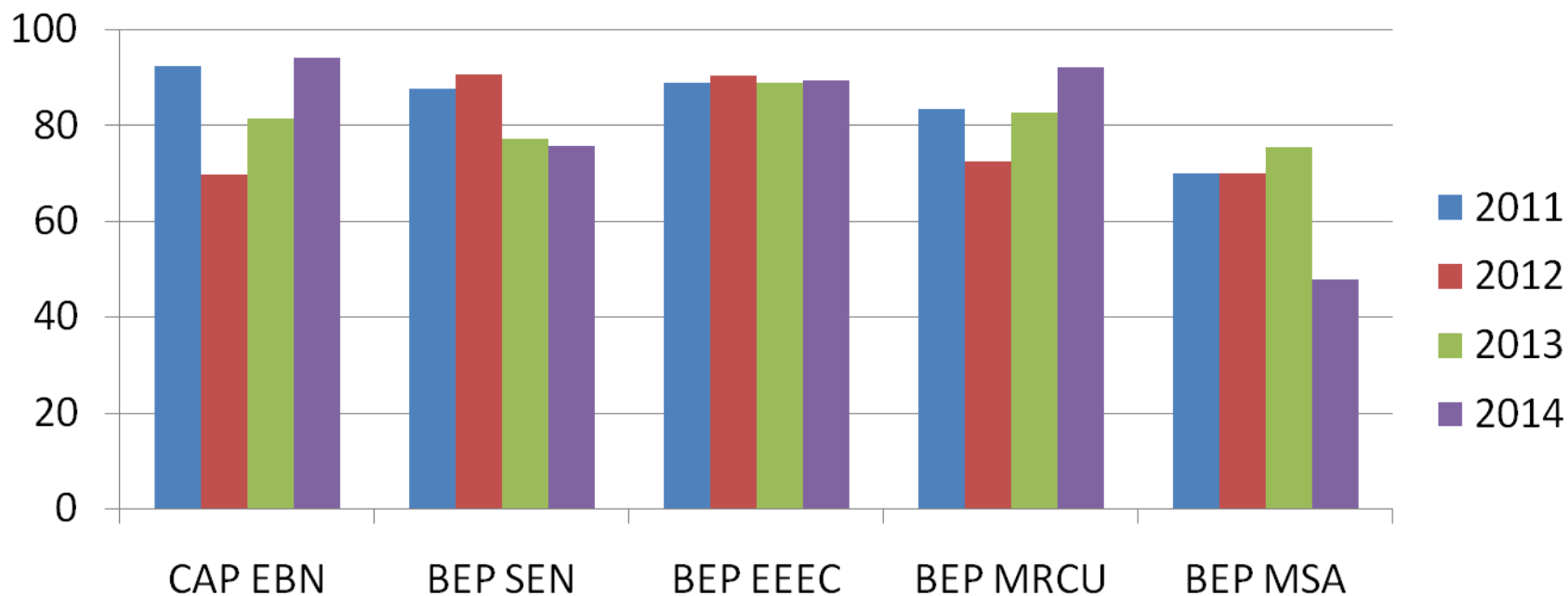


CAP



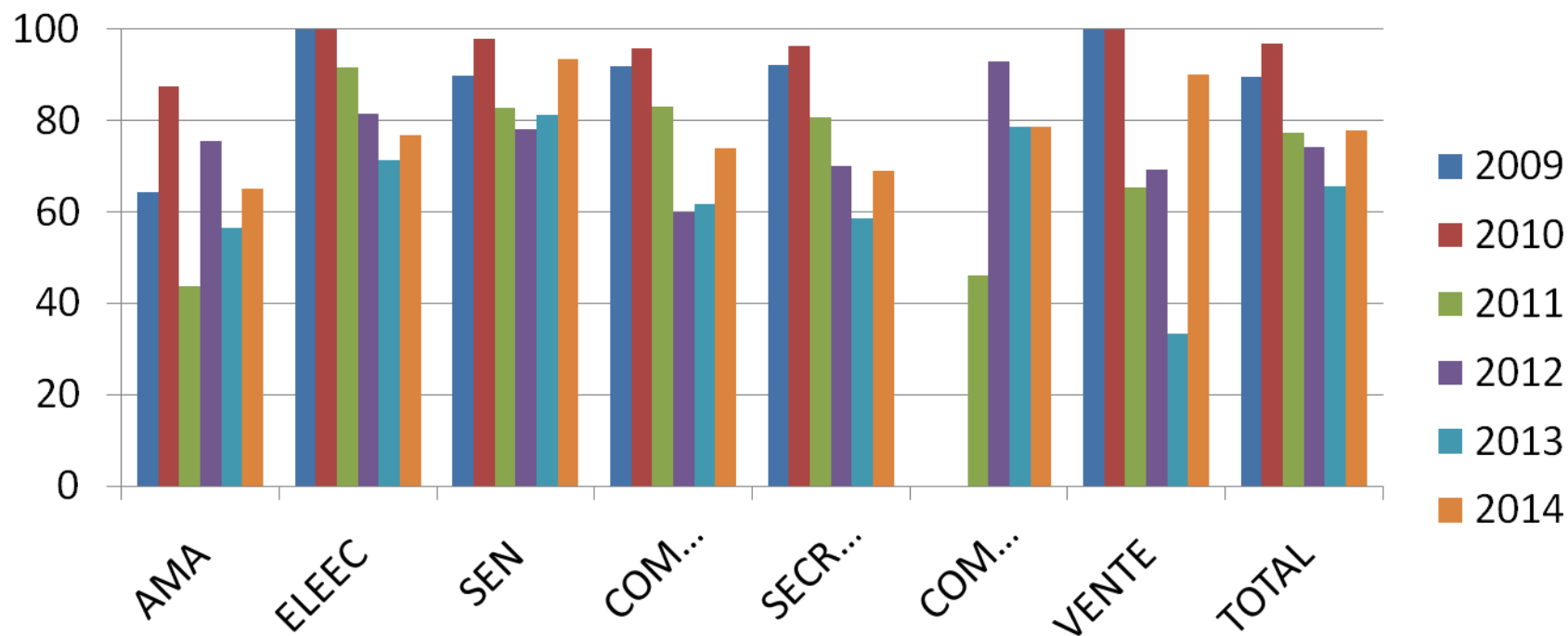
| | 2011 | 2012 | 2013 | 2014 |
|--------|------|------|------|------|
| 2 CAEB | 62,5 | 93,3 | 81,8 | 78,9 |
| 2 CARO | 100 | 94,4 | 87,5 | 75 |
| 2 CAEV | 64,7 | 66,7 | 64,7 | 40 |
| 2 CACO | 95,5 | 77,8 | 86,7 | 62,5 |
| TOTAL | 82,4 | 83,3 | 79,7 | 65,7 |

DIPLOMES INTERMEDIAIRES BEP-CAP



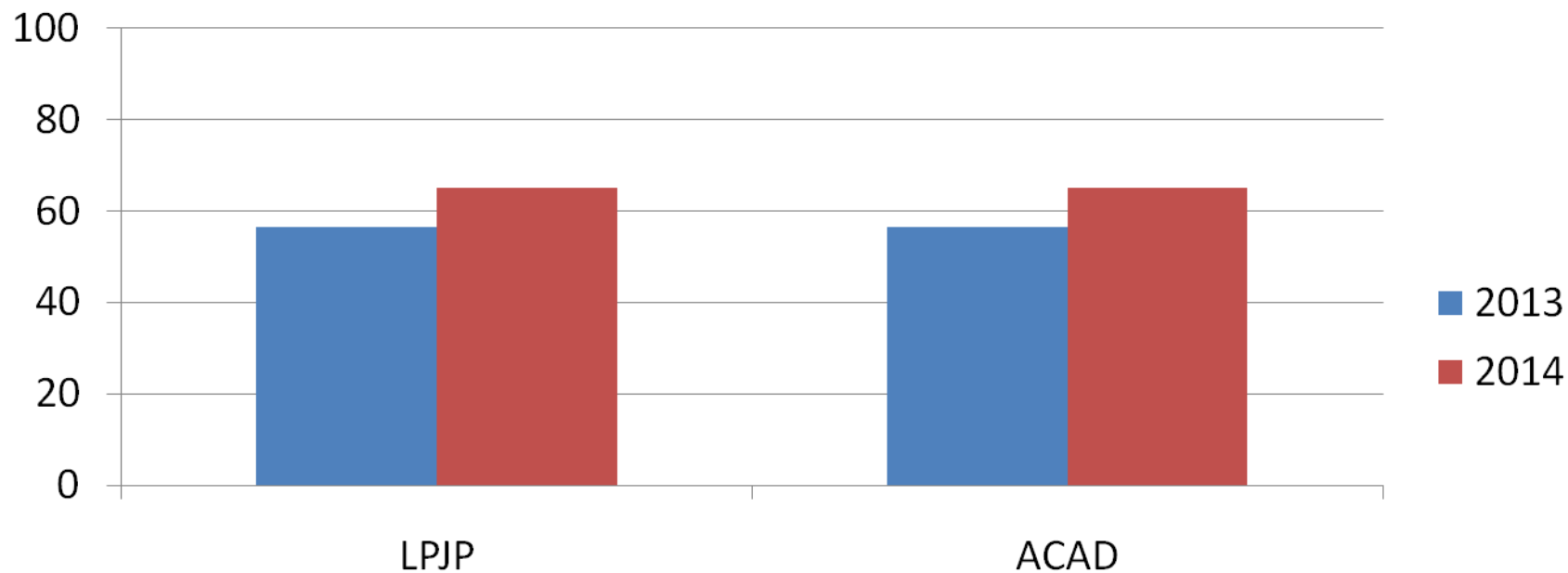
| | 2011 | 2012 | 2013 | 2014 |
|----------|------|------|------|------|
| CAP EBN | 92,3 | 69,6 | 81,3 | 94,1 |
| BEP SEN | 87,5 | 90,6 | 77,1 | 75,5 |
| BEP EEEC | 88,9 | 90,3 | 88,9 | 89,3 |
| BEP MRCU | 83,3 | 72,4 | 82,6 | 92 |
| BEP MSA | 69,8 | 69,8 | 75,3 | 47,8 |

BAC



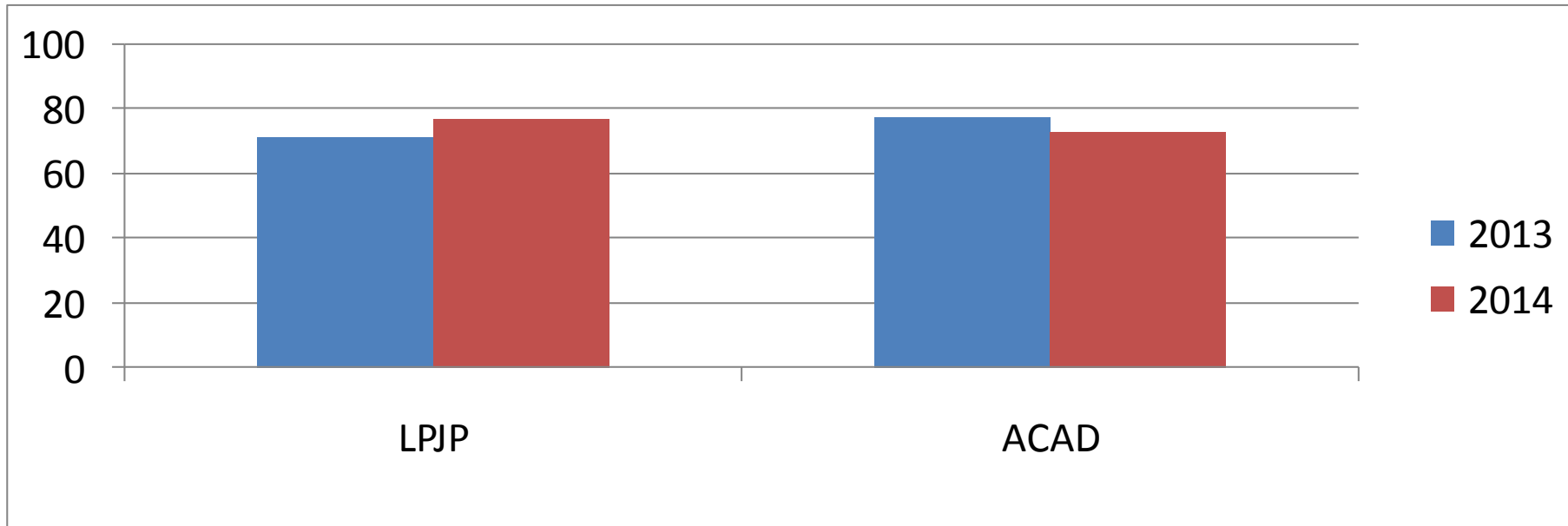
| | 2009 | 2010 | 2011 | 2012 | 2013 | 2014 |
|-------------|------|------|------|------|------|------|
| AMA | 64,3 | 87,5 | 43,8 | 75,6 | 56,5 | 65 |
| ELEEC | 100 | 100 | 91,7 | 81,5 | 71,4 | 76,9 |
| SEN | 89,8 | 98 | 82,8 | 78,1 | 81,3 | 93,5 |
| COMPTA | 92 | 95,8 | 83,1 | 60 | 61,8 | 73,9 |
| SECRETARIAT | 92,3 | 96,4 | 80,8 | 70 | 58,7 | 69 |
| COMMERCE | | | 46,2 | 92,9 | 78,6 | 78,6 |
| VENTE | 100 | 100 | 65,4 | 69,2 | 33,3 | 90 |
| TOTAL | 89,6 | 96,9 | 77,4 | 74,3 | 65,5 | 77,9 |

BAC PRO AMA



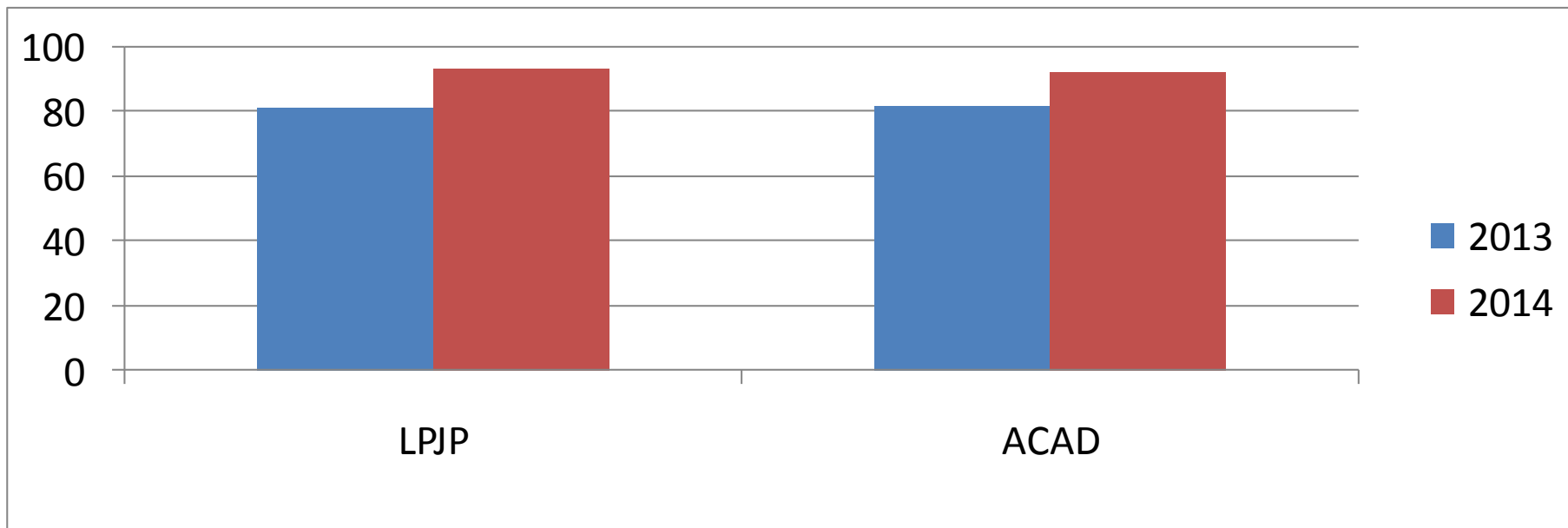
| | 2013 | 2014 |
|----------|------|------|
| LPJP | 56,5 | 65 |
| ACADEMIE | 56.5 | 65 |

BAC PRO ELEEC



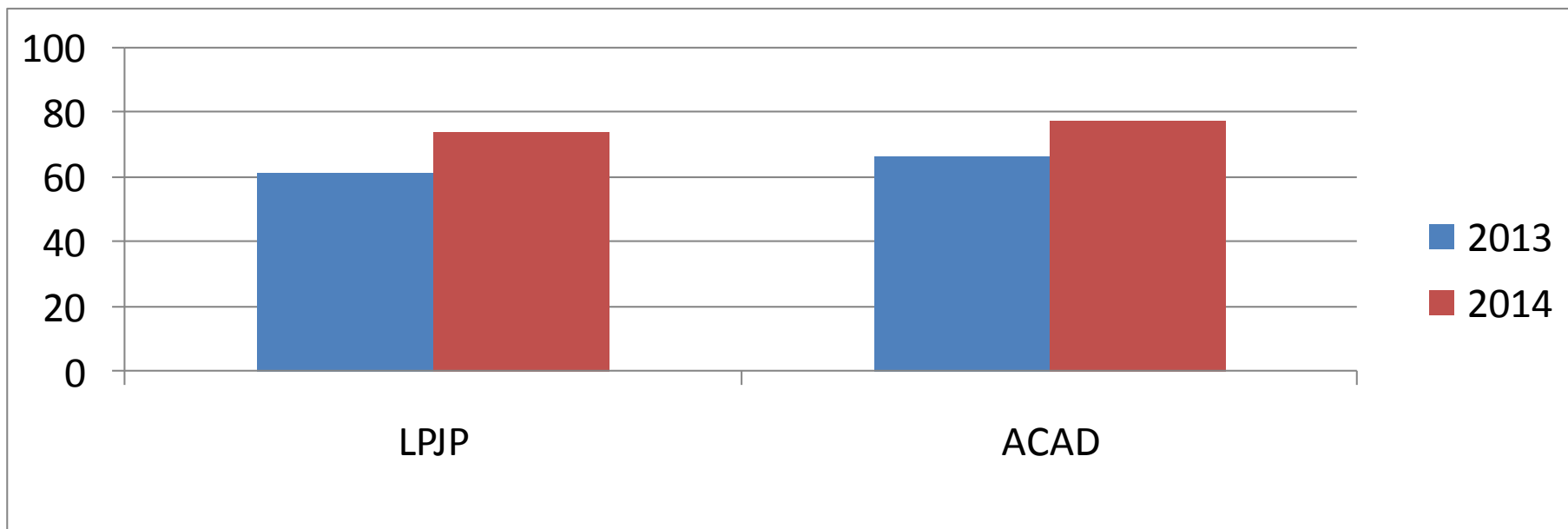
| | 2013 | 2014 |
|----------|------|------|
| LPJP | 71,4 | 76,9 |
| ACADEMIE | 77,6 | 73,2 |

BAC PRO SEN



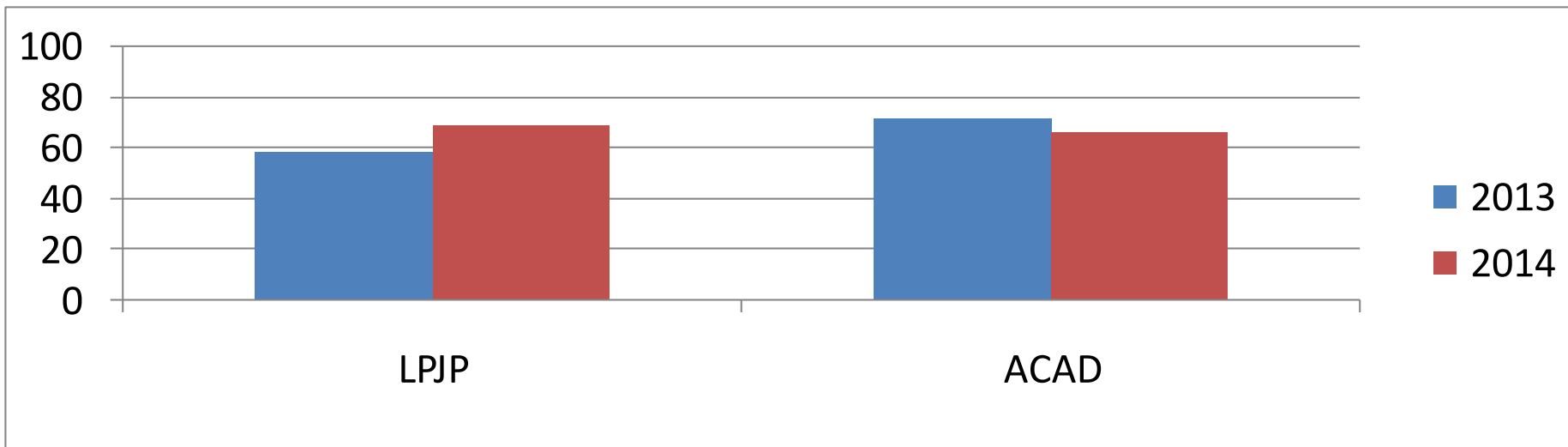
| | 2013 | 2014 |
|----------|------|------|
| LPJP | 81,3 | 93,5 |
| ACADEMIE | 82 | 92,4 |

BAC PRO COMPTABILITE



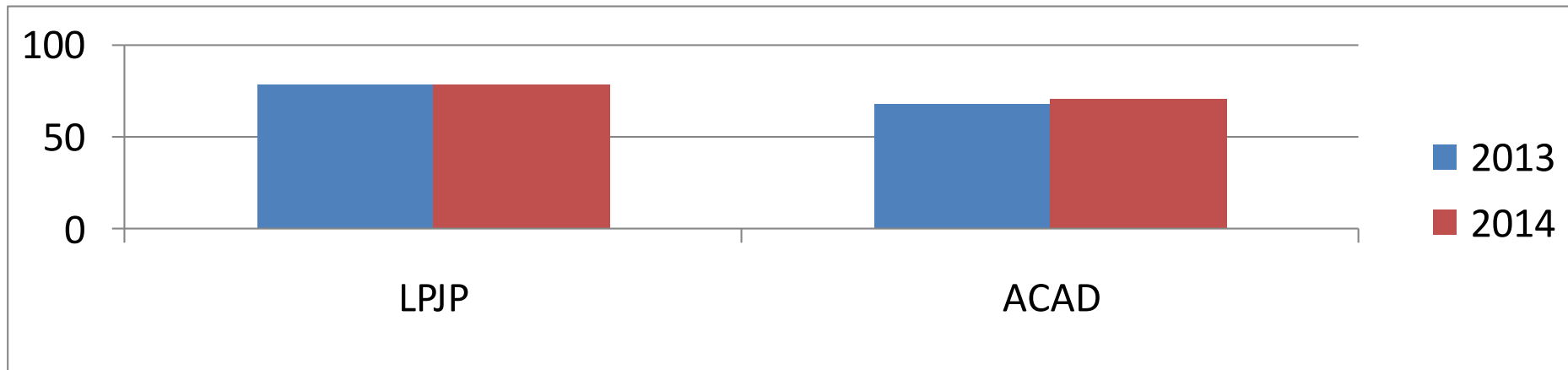
| | 2013 | 2014 |
|----------|------|------|
| LPJP | 61,8 | 73,9 |
| ACADEMIE | 66,6 | 77,6 |

BAC PRO SECRETARIAT



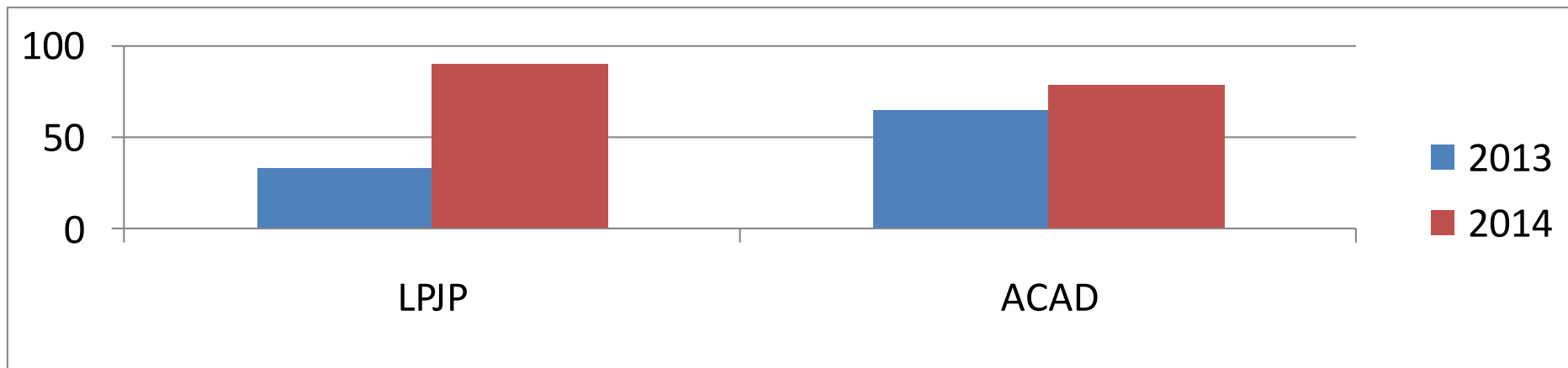
| | 2013 | 2014 |
|----------|------|------|
| LPJP | 58,7 | 69 |
| ACADEMIE | 71,9 | 66,4 |

BAC PRO COMMERCE



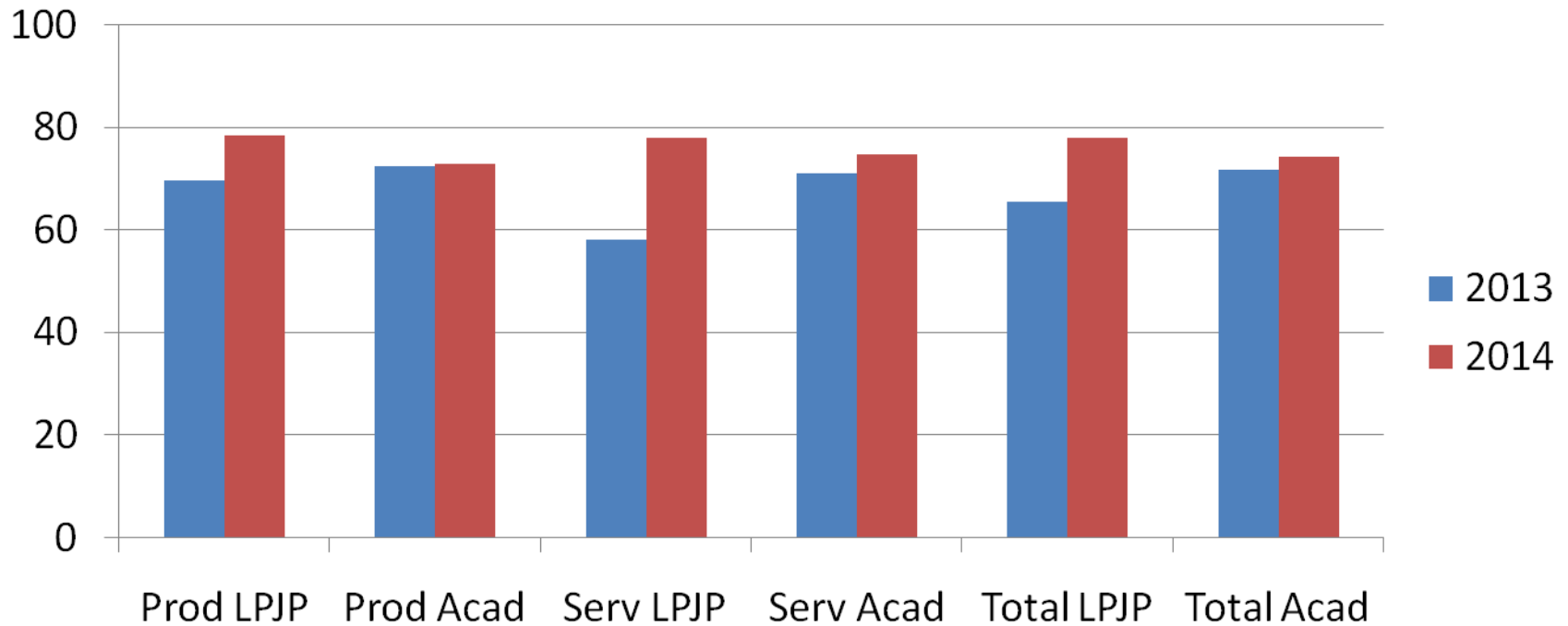
| | 2013 | 2014 |
|----------|------|------|
| LPJP | 78,6 | 78,6 |
| ACADEMIE | 67,5 | 71,1 |

BAC PRO VENTE



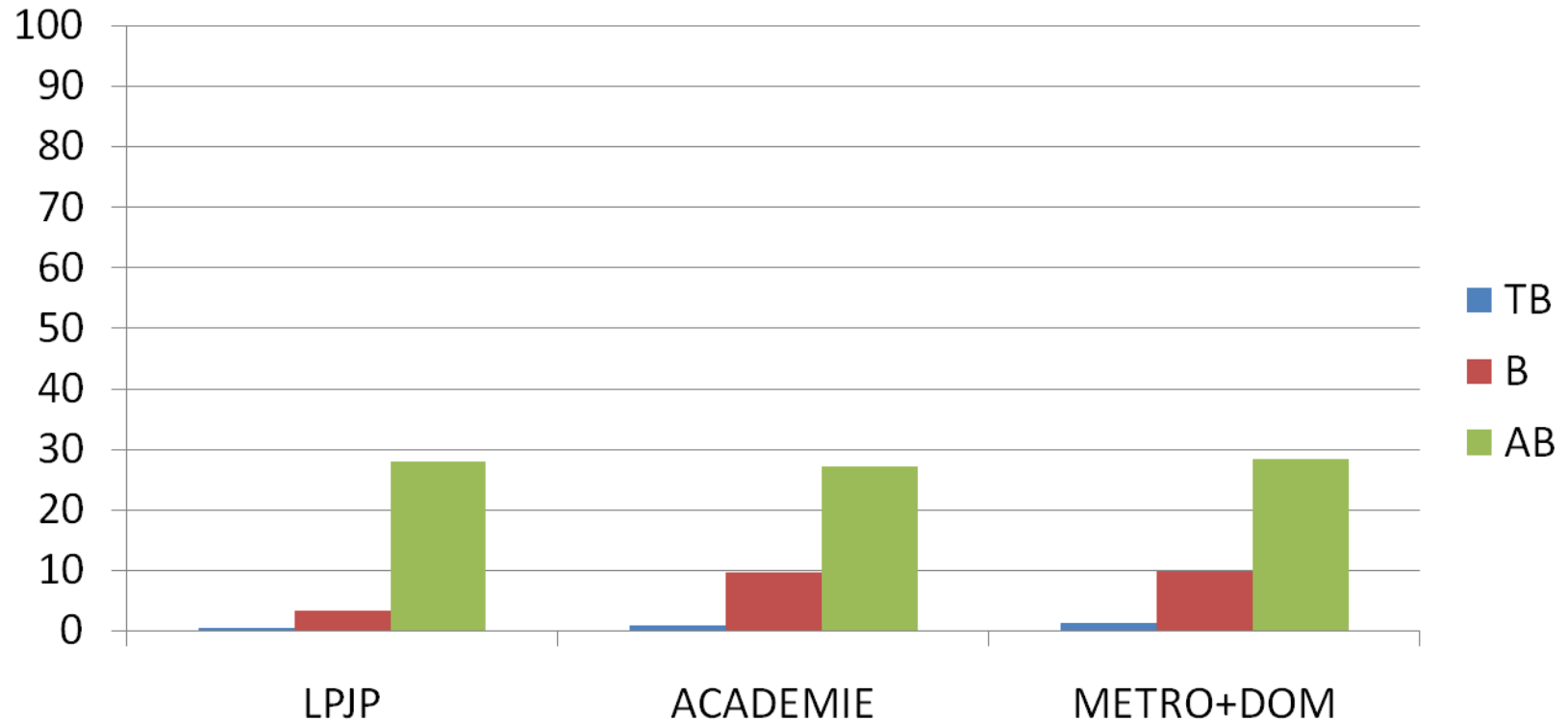
| | 2013 | 2014 |
|----------|------|------|
| LPJP | 33,3 | 90 |
| ACADEMIE | 64,6 | 78 |

Taux de réussite



| | 2013 | 2014 |
|------------|------|------|
| Prod LPJP | 69,7 | 78,5 |
| Prod Acad | 72,5 | 72,9 |
| Serv LPJP | 58,1 | 77,9 |
| Serv Acad | 71,1 | 74,7 |
| Total LPJP | 65,5 | 77,9 |
| Total Acad | 71,8 | 74,4 |

Répartition des bacheliers selon les mentions



| | TB | B | AB |
|-----------|-----|-----|------|
| LPJP | 0,4 | 3,4 | 27,9 |
| ACADEMIE | 1 | 9,7 | 27,1 |
| METRO+DOM | 1,3 | 9,9 | 28,3 |